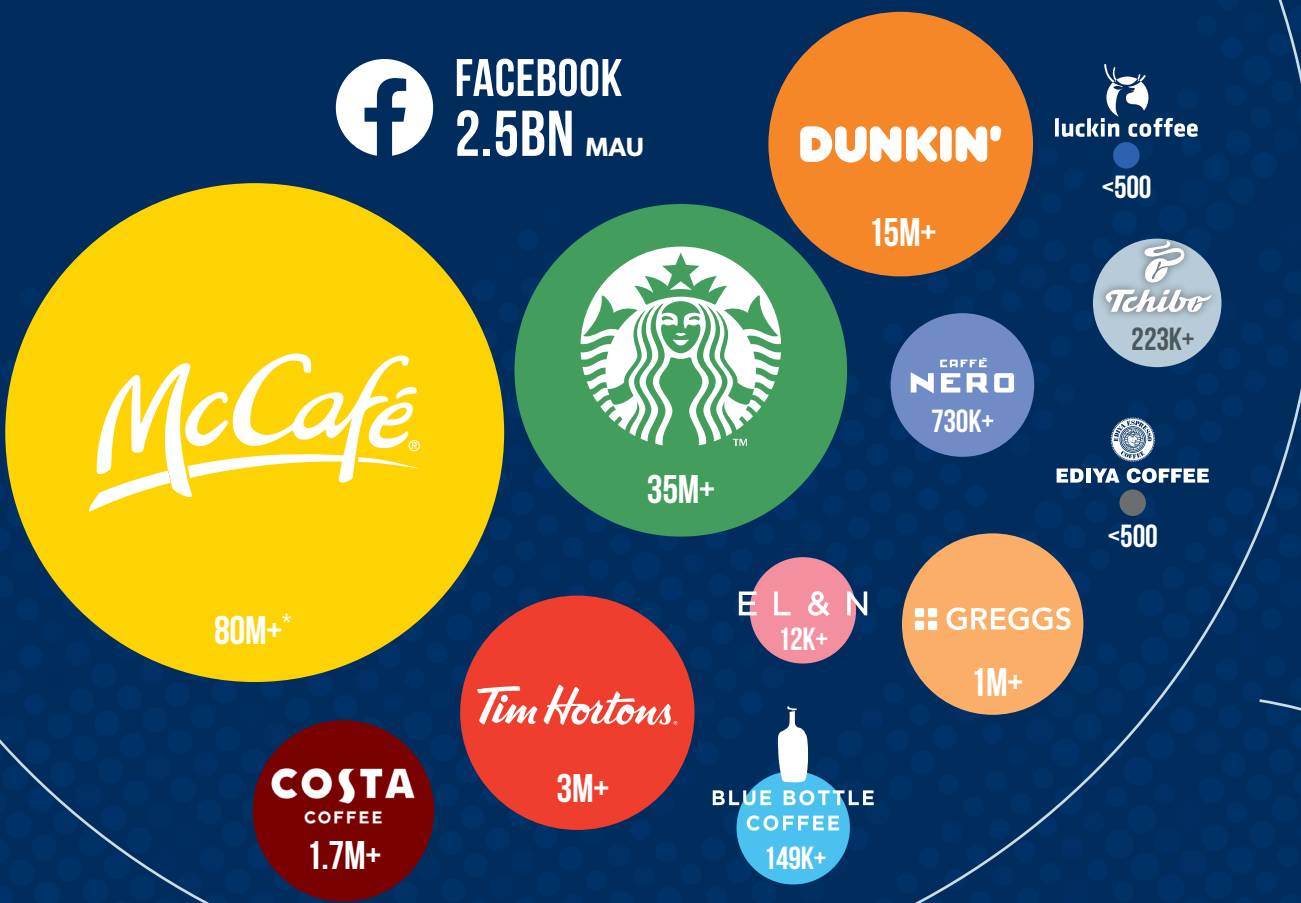


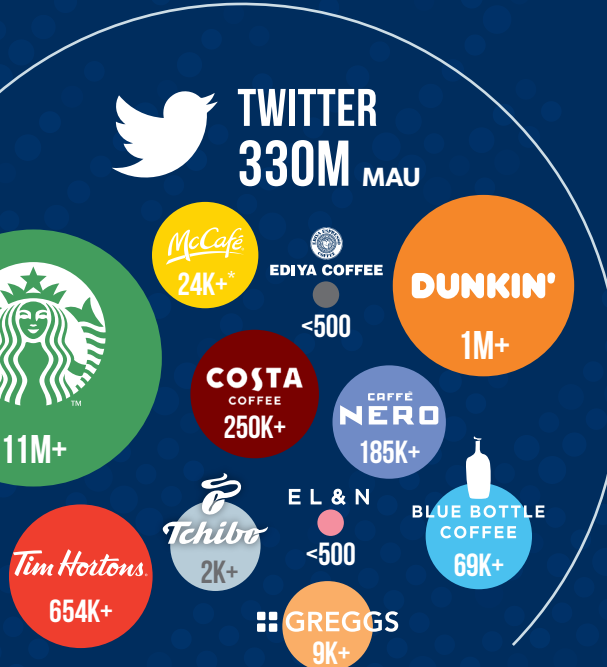
GLOBAL COFFEE SHOP SOCIAL MEDIA ACCOUNTS

MAU = MONTHLY ACTIVE USERS



NUMBER OF STORES WORLDWIDE

Starbucks (US)	32,700
McCafé (US)	15,000
Dunkin' (US)	13,000
Tim Hortons (Canada)	4,800
Luckin Coffee (China)	4,500
Costa Coffee (UK)	4,000
Ediya Coffee (South Korea)	3,000
Greggs (UK)	2,000
Caffè Nero (UK)	1,100
Tchibo Kaffee Bar (Germany)	1,000
Blue Bottle Coffee (US)	91
EL&N London (UK)	8



*Includes McDonald's social media accounts